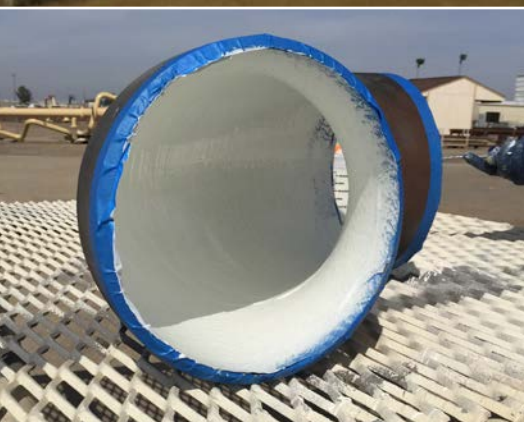




**ARCHCO**  <sup>TM</sup>  
PROTECTIVE LINING SYSTEMS



# ARCHCO <sup>TM</sup> CORROSION RESISTANT LININGS

## PROTECTIVE LININGS FOR PIPES

### LININGS FOR:

Chemical Resistance

Abrasion Resistance

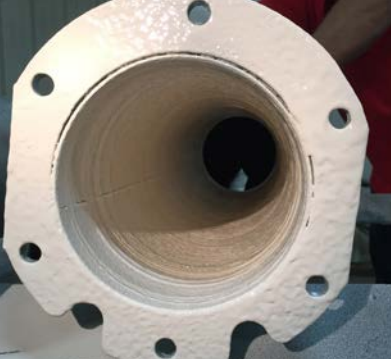
Heat Resistance up to 203°C (400°F) and spikes up to 232°C (450°F)

Internal Steel Substrates

Internal Steel Pipe Surface

Wide Range of Temperatures & Pressures

**Premier** <sup>TM</sup>



## ARCHCO 436™ EPOXY

Epoxy coating for internal pipe lining.



## ARCHCO 453™ EPOXY

Two-part epoxy for industrial storage and process tanks and pipelines.



## ARCHCO 453HT™ EPOXY

Internal epoxy phenolic-novolac lining for tanks and pipes.



## ARCHCO 453HTP™ EPOXY

Abrasion resistant internal epoxy phenolic-novolac lining for pipes.



## ARCHCO 466™ EPOXY

Glass flake epoxy coating for high temperature and chemically aggressive environments.

ARCHCO™ linings and coatings are designed specifically to protect steel and concrete surfaces from aggressive environments. Specialist high temperature coatings providing long term corrosion prevention for water tanks, air handling systems, floor and bund protection, valve and pipe linings, road tankers, chemical storage, effluent treatment tanks and storage tanks.

### FEATURES

- Excellent adhesion
- Very low permeability
- Excellent temperature resistance (up to 203°C/ 400°F)
- Excellent abrasion resistance
- Excellent resistance to H<sub>2</sub>S gases
- Excellent chemical resistance
- Cathodic disbondment resistance
- Suitable for fresh and salt water immersion
- Excellent flexibility
- MIC & acid resistance
- Resistance to hydrocarbons
- Long working life

**ARCHCO**™  
PROTECTIVE LINING SYSTEMS

PUB No. 456.09.2022



Q 09303

EMS 67780

**PREMIER COATINGS LTD**

TEL: +44 (0) 1233 770 663

EMAIL: [enquiries@premiercoatings.com](mailto:enquiries@premiercoatings.com)

WEB: [www.premiercoatings.com](http://www.premiercoatings.com)

Headcorn Road, Smarden

Ashford, Kent TN27 8PJ

UNITED KINGDOM



A MEMBER OF WINN & COALES INTERNATIONAL