



PREMSTRIP™



PREMSTRIP™

OPTIMAL SEALING FOR PRECAST CONCRETE UNITS

SUITABLE FOR:

- Box Culverts
- Manholes
- Inspection Chambers
- Shafts
- Tunnels
- Pipe Sections

Premier™



**PREMSTRIP™ IS DESIGNED TO
PROVIDE A PERMANENTLY FLEXIBLE,
WATERTIGHT JOINT BETWEEN
PRECAST CONCRETE UNITS.**

These joints are formed under compression when the compound is reduced to half its original thickness. Premstrip is easy to apply by hand and ensures an effective long-term seal under all site and weather conditions.

SYSTEM FEATURES:

- Permanently flexible watertight seal
- Meets BS EN 1917 requirements for manholes (no need for concrete surrounds)
- One easy to use grade for all weather conditions
- Fast drying primer
- Supplied in appropriate profiles for every type of joint
- Approved and meets government requirements
- Manufactured in the UK - professional technical advisory service
- Resistant to chemical and biological attack

APPROVALS

Premstrip is specifically approved as a joint sealant for precast concrete units manufactured to BS EN 1917.

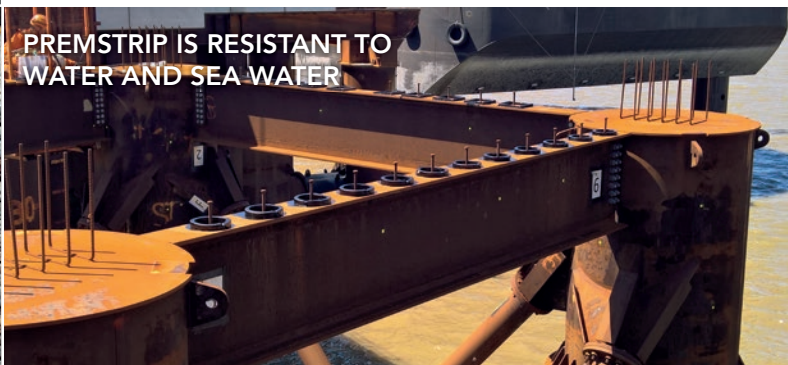
- BS EN 1917:2002 Concrete manholes and inspection chambers
- CESWI Civil Engineering Specification for the Water Industry 7th Edition (UKWIR Ltd)
- Sewers for Adoption, 5th Edition (WRc plc)



APPLICATION OF PREMSTRIP TO A BOX CULVERT



A MANHOLE AFTER PREMSTRIP APPLICATION



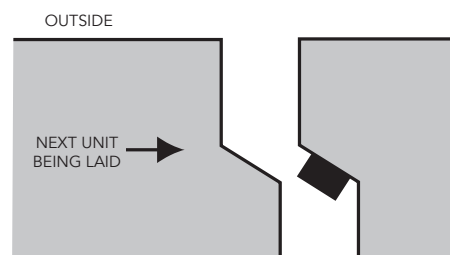
**PREMSTRIP IS RESISTANT TO
WATER AND SEA WATER**



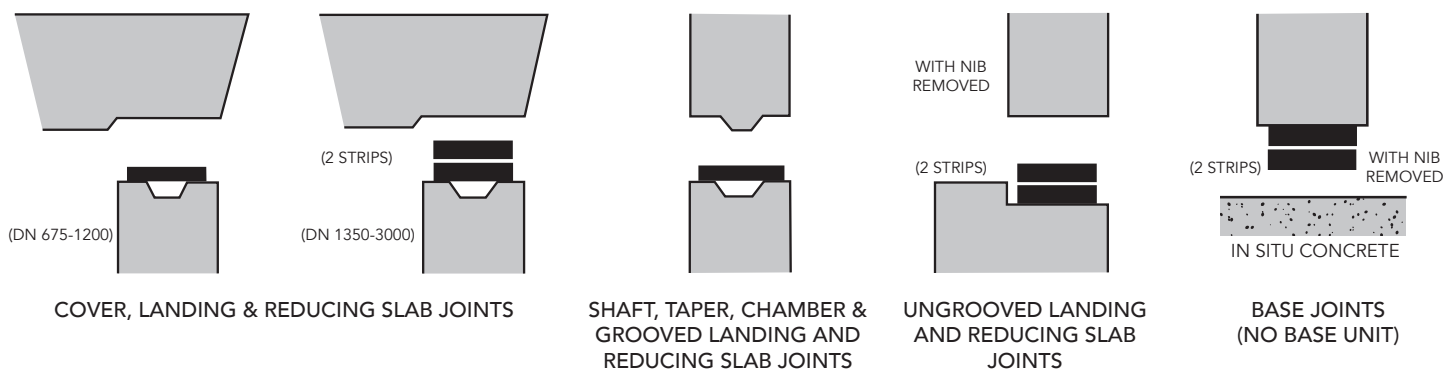
**PREMSTRIP USED FOR SEALING
CONCRETE UNITS ON BERTHS**

BOX CULVERT JOINTS

Premstrip Size	25mm x 40mm (unless otherwise specified by the concrete unit manufacturer)
Premstrip Length (per joint)	Formula = (2 x height) + (2 x width)
Premstrip Primer	5 litres per 60m

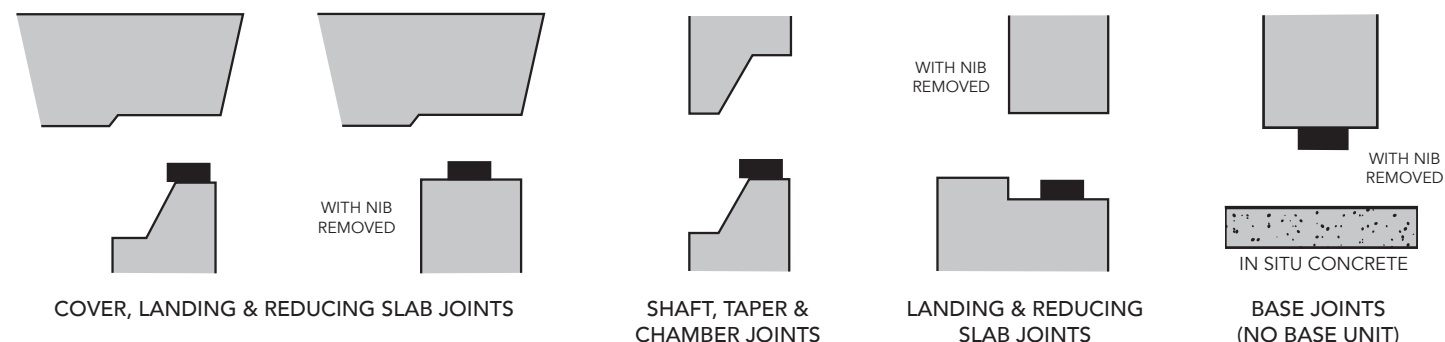


TONGUE AND GROOVED MANHOLE JOINTS

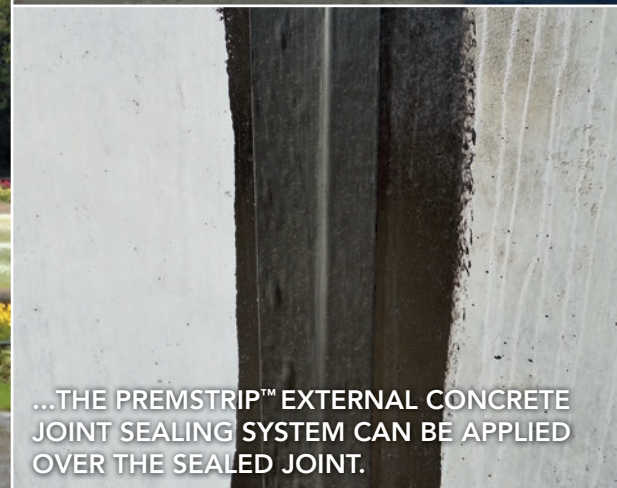


Premstrip Size	12mm x 25mm		12mm x 60mm		12mm x 80mm				12mm x 120mm			
Unit Nom. Size (DN)	675	750	900	1050	1200	1350	1500	1800	2100	2400	2700	3000
Premstrip Length	2.5m	3m	3.5m	4m	4.5m	5m	5.5m	6.5m	7.5m	8.5m	9.5m	10.5
Premstrip Primer	5 litres per 75m				5 litres per 50m				5 litres per 35m			

OGEE OR REBATED MANHOLE JOINTS



Premstrip Size	12mm x 25mm		20mm x 25mm		22mm x 30mm				25mm x 40mm			
Unit Nom. Size (DN)	675	750	900	1050	1200	1350	1500	1800	2100	2400	2700	3000
Premstrip Length (per joint)	2.5m	3m	3.5m	4m	4.5m	5m	5.5m	6.5m	7.5m	8.5m	9.5m	10.5
Premstrip Primer	5 litres per 120m				5 litres per 90m				5 litres per 60m			



PACKING DETAILS

Premstrip Size	12 x 60	12 x 80	12 x 120	12 x 25	20 x 25	22 x 30	25 x 40
Premstrip Length (per carton)	4 x 6m	3 x 6m	2 x 6m	9 x 6m	6 x 5m	5 x 4.5m	4 x 4m
Premstrip Primer	5 litre and 25 litre cans						



PUB No. 453.07.2019

PREMIER COATINGS LTD

TEL: +44 (0) 1233 770 663
EMAIL: enquiries@premiercoatings.com
WEB: www.premiercoatings.com

Headcorn Road, Smarden
Ashford, Kent TN27 8PJ
UNITED KINGDOM



Q 09303 | EMS 677780
ISO 9001:2015 & ISO 14001:2015



A MEMBER OF WINN & COALES INTERNATIONAL