



# PREMCOTE™ COLD-APPLIED TAPES

PROTECTION FOR BURIED OR IMMERSED PIPES  
AND FITTINGS

## TAPES FOR:

Weld Joints  
Bends  
Fittings  
Pipe  
Pipeline Rehabilitation  
Pipeline Coating Repair and more

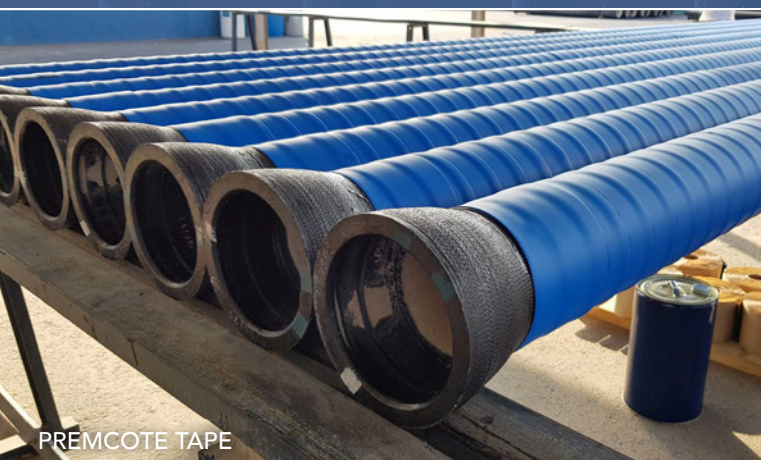


## HIGH PERFORMANCE, HEAVY-DUTY PVC-REINFORCED RUBBER BITUMEN ADHESIVE TAPES FOR THE CORROSION PREVENTION OF BURIED OR IMMERSED PIPES AND FITTINGS.

Premcote™ Tapes can be applied by machine to pipe and pipe fittings or by hand to welded joints and bends. Long rolls are available for factory application.

### FEATURES:

- Cold-applied
- Good impact resistance
- Printed centre line for easy wrapping - available on request
- Good conformability in all grades
- Excellent adhesion to pipe
- Compatible with common pipe coatings
- Excellent resistance to cathodic disbonding
- Resistant to acids, alkalis and salts
- A component of Premier's recommended system for P2 Civil Engineering Specification for Water Industry, 7th Edition



PREMCOTE TAPE



PREMCOTE TAPE

Premcote™ Tapes have a tough, PVC or HDPE reinforced backing for the prevention of corrosion on buried or immersed pipes and fittings, whatever the size.

The thickness is selected in several grades to suit different requirements of mechanical strength and conformability. The adhesive layer is protected by an interleaving, wider than the tape, which is discarded during application.

## PRODUCT GRADES

### Premcote 150™ and Premcote 150™ Tropical

Designed for the protection of small to medium diameter pipes, welded joints, bends and fittings.

The combination of extremely conformable PVC backing and polymer bitumen adhesive ensures good contact with the metal substrate and excellent adhesion to resist displacement or damage. Premcote 150 Tropical is a high temperature version designed for tropical climates.

### Premcote 500™ and Premcote 500™ Tropical

A medium-duty tape, designed to protect small to medium diameter pipes, welded joints, bends and fittings.

Without sacrificing conformability, the thicker PVC backing provides excellent resistance to damage during handling and backfilling. Premcote 500 Tropical is a high temperature version designed for tropical climates.

### Premcote 1500™ and Premcote 1500™ Tropical

A robust heavy-duty tape designed for the protection of medium to large diameter pipes, welded joints, bends and fittings for below ground or immersed environments. The extremely tough PVC backing combined with polymer bitumen adhesive ensures complete protection and exceptional resistance to damage by impact, poor backfill or aggressive ground conditions. Premcote 1500 Tropical is a high temperature version designed for tropical climates.

Also available is Premcote 1550™, which has a stiffer PVC backing.

Premcote Tape	Roll length	Roll widths	Total thickness (ASTM D1000)
150	15m	50 - 300mm	1.050mm
150 Tropical	15m	50 - 300mm	1.050mm
101 Tropical	15m & 30m	50 - 300mm	1.050mm
500	12m	50 - 300mm	1.12mm
500 Tropical	12m	50 - 300mm	1.12mm
1000 Tropical	12m	50 - 300mm	1.12mm
1500	12m	50 - 150mm	1.650mm
1500 Tropical	12m	50 - 150mm	1.650mm
1550	12m	50 - 150mm	1.650mm

## RELATED PRODUCTS

### Premcote™ Primer

A fast-drying bitumen based primer for all surfaces, prior to the application of Premcote Tapes (including high temperature grades designed for tropical climates).

### Premier™ Moulding Compound and Premier™ Joint Moulding Putty

Cold-applied for moulding around irregular profiles (couplings, flanges, valves) to provide a contour suitable for wrapping. It is a petrolatum compound containing inert siliceous fillers and vegetable fibres. Contains no volatile organic solvents.

Premier Joint Moulding Putty is specially formulated for use in hot climates.

### Premtape™ LD Mastic

Petrolatum compound containing beads of cellular polymer and flow control additives. Contains no volatile organic solvents.

### Outerwraps

Where additional mechanical protection is required, Premier Coatings Ltd offer a full range of outerwraps which provide extra mechanical resistance or additional UV protection.

Premcote Tape is a component of Premier's recommended system for P2 specifications covering the protection of ferrous pipes, joints and fittings within the water industry.

## APPLYING THE PREMIER P2 SYSTEM™

### 1. Cleaning

Clean the surface thoroughly by removing all loose scale, rust, dirt etc. Ensure that the pipe and any joints are as dry as possible.

### 2. Priming

Prime the cleaned area with Premcote Primer.

### 3. Profiling

Apply Premier Moulding Compound, Premier Joint Moulding Putty or Premtape LD Mastic around and between all bolts and to fill all hollows and voids. Continue to apply mastic until the valve or fitting has a smooth profile suitable for wrapping.

### 4. Wrapping the Premcote Tape

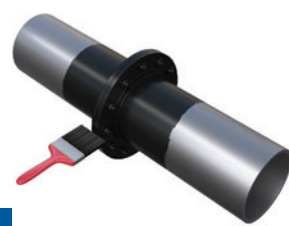
Peel back about 2cm - 5cm of interleaving and apply adhesive side of the tape to the primed surface and press down.

Next, spirally wrap the tape with tension making sure a 55% overlap is achieved which ensures a double wrap at all areas. Where there are joints, be sure to start from the middle, complete a circumferential wrap and continue wrapping towards the pipe on one side and then repeat on the other side. Smooth out all air pockets and wrinkles. On each side of the joint or fitting, the tape extends along 150mm of the barrel of the pipe.

For further application information, please refer to the Premcote Tape Instructions For Use



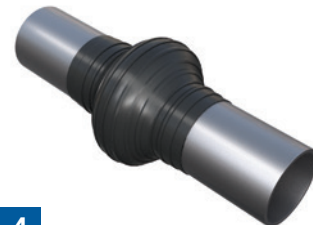
Clean surface thoroughly with wire brush.



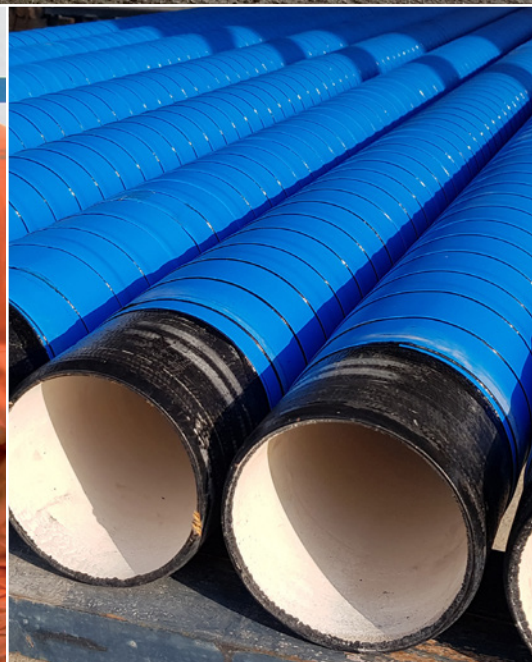
Apply Premcote Primer with brush. Protective gloves must be worn.



Premier Moulding Compound or Premtape LD Mastic is applied.



Premcote Tape is applied, wrapped with a 55% overlap.



PUB No. 538.12.2020



Q 09303 I EMS 67780  
ISO 9001:2015 & ISO 14001:2015

## PREMIER COATINGS LTD

TEL: +44 (0) 1233 770 663  
EMAIL: [enquiries@premiercoatings.com](mailto:enquiries@premiercoatings.com)  
WEB: [www.premiercoatings.com](http://www.premiercoatings.com)

Headcorn Road, Smarden  
Ashford, Kent TN27 8PJ  
UNITED KINGDOM



A MEMBER OF WINN & COALES INTERNATIONAL