



# PREMIER COATINGS LTD™ PROTECTION OF PIPELINE FITTINGS AND VALVES

A HIGH PERFORMANCE RANGE OF MASTICS & TAPE  
WRAP SYSTEMS

## SUITABLE FOR:

Valves  
Flanges  
Couplings  
Nuts and Bolts  
Irregular Shaped Fittings





# Premier™

## PREMIER COATINGS MASTICS & TAPE WRAP SYSTEMS FOR PIPELINE FITTINGS

A FULL RANGE OF SELF-SUPPORTING, NON-CRACKING COLD-APPLIED MASTICS AND TAPE WRAP SYSTEMS FOR MECHANICAL PIPE JOINTS, FLANGES AND VALVES.

### FEATURES:

- Minimal surface preparation required
- Conforms, fills and seals awkward shapes and voids
- Non-drying and non-shrinking
- Quick and easy to apply
- Easy inspection after application
- Resistant against aggressive backfill
- Choice of compatible tapes
- Complies with P1 and P2 Civil Engineering Specifications for the Water Industry



Section of pipe with Premtape LD Mastic applied

## PREMIER PIPELINE MASTICS

Used prior to the application of Premier Petrolatum Tapes or Premier Bitumen Tapes, Premier Mastics are ideal for building up smooth contours on mechanical pipe joints, valves, bolted flanges, couplings and fittings. Premier Mastics remain permanently plastic whilst being impervious to moisture. They are highly resistant to mineral acids, alkalis, salts and mechanical stress over a wide range of temperatures.

Should it be necessary at any time to examine, modify or repair the items previously sealed, the mastics can be easily removed and re-used if required, provided the product has not been contaminated.

### Premtape™ LD Mastic

Petrolatum compound containing beads of cellular polymer and flow control additives. Contains no volatile organic solvents.

Premtape™ LD Mastic Tropical is intended for the same applications as Premtape LD Mastic, but has a higher temperature limit and is suitable for use in tropical climates.

### Premier™ Moulding Compound

Petrolatum compound containing inert siliceous fillers and vegetable fibres. Contains no volatile organic solvents.

### Premier™ Moulding Compound Strips

Preformed mastic with a triangular profile. They provide a quick and simple method of protection on tyton joints or where access may be difficult.

### Premtape™ Tropical Blanket

Preformed blankets of Premier Moulding Compound supported by a coated textile backing and protected by a removable plastic film interleaving. The Premtape Tropical Blanket has an overall thickness of 10mm.



PREMIER MOULDING COMPOUND



PREMTAPE LD MASTIC



PREMTAPE TROPICAL BLANKET



Premtape Tropical Blankets were developed for use on proprietary mechanical joints such as Viking Johnson Couplings - they provide a quick and easy method for this type of application.

## PREMIER PIPELINE TAPES

A range of petrolatum tapes (Premtapes) and cold applied bitumen laminate tapes (Premcote Tapes) for corrosion prevention and overwrapping couplings, joints and fittings profiled with Premier mastic. The tapes offer a choice of mechanical protection to suit a wide variety of environments and comply with the P1 and P2 Civil Engineering Specifications for the Water Industry.

### Premtape™ Temperate

For the protection of metal against corrosion above and below ground e.g. the wrapping of small and medium diameter pipes, joints, tie rods and post tension cables. The extreme conformability enables the tape to be easily applied to awkward profiles. Suitable for P1 specifications.

### Premtape™ Tropical

Intended for the same applications as Premtape Temperate, but offers a higher temperature limit and is suitable for use in tropical climates.

### Premcote™ Tapes

For the protection of all sizes of buried or immersed pipes and fittings against corrosion. Suitable for machine or hand wrapping of welded joints, bends, bare pipe lengths and pipe fittings. Available in several grades, these tough tapes offer flexibility combined with mechanical strength. Suitable for P2 specifications.

Premcote™ Tropical Tapes are intended for the same applications as Premcote Tapes, but offer a higher temperature limit and are suitable for use in tropical climates.

## OUTERWRAPS

Where additional mechanical protection is required, Premier offers a PVC tape outerwrap for over-wrapping Premier Petrolatum Tape coatings that are applied to couplings, flanges and valves.

### Premier™ PVC Self-Adhesive Tape

Premier PVC Self-Adhesive Tape is a PVC sheeting coated on one side with a rubber resin, pressure sensitive adhesive.

#### Product features:

- Self-adhesive
- Useful outerwrap for Premier Coatings products where physical contact is likely
- Protects against mechanical damage
- Available in black and yellow





# METHOD FOR PROTECTING PIPELINE FITTINGS AND VALVES

## 1. Cleaning

Clean the joint and the adjacent pipe thoroughly by removing all loose scale, rust, dirt etc. Ensure that the joint and adjacent pipe are as dry as possible.

## 2. Priming

Prime the cleaned area with appropriate primer for the over-wrapping tape (e.g. Prempaste for Premtape Temperate and Premtape Tropical, or Premcote Primer for Premcote Tapes).

## 3. Profiling

Apply mastic around and between all bolts and to fill all hollows and voids. Continue to apply mastic until the valve or fitting has a smooth profile suitable for wrapping.

## 4. Wrapping

Next, spirally wrap the tape with tension making sure a 55% overlap is achieved which ensures a double wrap at all areas. Be sure to start from the middle of the joint, complete a circumferential wrap and continue wrapping towards the pipe on one side and then repeat on the other side. Smooth out all air pockets and wrinkles. On each side of the joint or fitting the tape shall extend along 150mm of the barrel of the pipe.



### APPLYING THE PREMIER P1 SYSTEM™



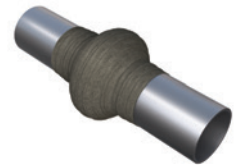
Clean joint thoroughly with wire brush.



Apply Prempaste to joint with brush - or gloved hand. Protective gloves must be worn.



Premtape LD Mastic is applied to the joint.

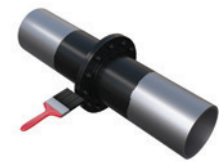


Premtape Temperate / Premtape Tropical is applied to the joint, wrapped with a 55% overlap.

### APPLYING THE PREMIER P2 SYSTEM™



Clean joint thoroughly with wire brush.



Apply Premcote Primer to joint with brush. Protective gloves must be worn.



Premtape LD Mastic is applied to the joint.



Premcote Tape is applied to the joint, wrapped with a 55% overlap.

PUB No. 545.01.2021



**PREMIER COATINGS LTD**

TEL: +44 (0) 1233 770 663  
EMAIL: [enquiries@premiercoatings.com](mailto:enquiries@premiercoatings.com)  
WEB: [www.premiercoatings.com](http://www.premiercoatings.com)

Headcorn Road, Smarden  
Ashford, Kent TN27 8PJ  
UNITED KINGDOM



A MEMBER OF WINN & COALES INTERNATIONAL